

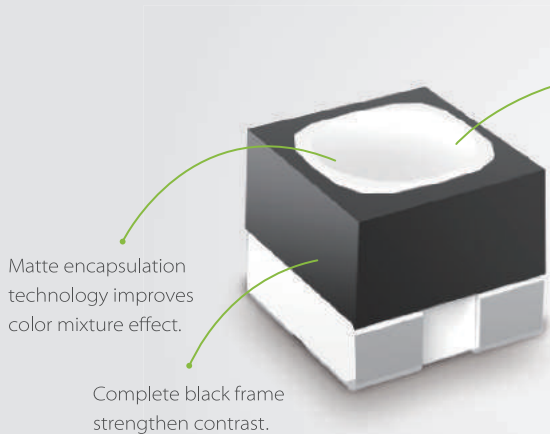
SCREENLINE
the screen makes the difference

XT |

POSTER indoor

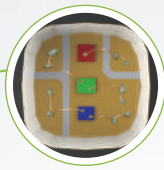


Basic Key Technology

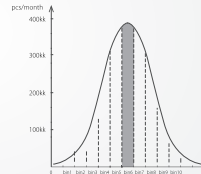
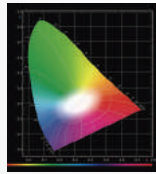


Matte encapsulation technology improves color mixture effect.

Complete black frame strengthen contrast.



The connection craft with double gold wires guarantees best reliability.



High Quality LED Lamp

LED lamp is outdoor SMD1921 from famous brand which is high brightness, waterproof and Anti-UV.



Water-proof



Anti-UV



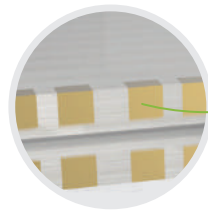
High Brightness

With monthly output over 400million pcs, this led lamp is produced with single BIN from one batch to ensure excessive uniformity in brightness

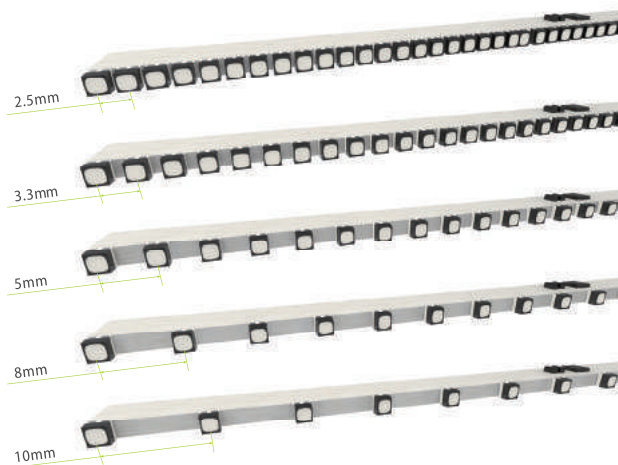
3D-SMT Technology

NEXNOVO paid more than 3 years to research the 3D-SMT technology. Every plate on the PCB side is with 8 times of deep processing to ensure a strong connection between the LED and the PCB.

The connection of each single LED is strong enough to force at least 4 Newton (about 0.4kg), which ensures a stable working .



LED strip



Module

Based on our special 3D-SMT technology LED strip, it is able to design different kinds of LED module for different purpose. Every NEXNOVO finished product is based on many single processing or detail design.



SMALL WINDOW □ BIG VIEW



The first transparent led poster in the world

The highest density transparent LED display in the world

Rectangular corner Round corner



XT Series
65%–95%
Unparalleled
transparency

Product Features



Unparalleled Transparency



Light weight and Easy
for transportation



Modular Design



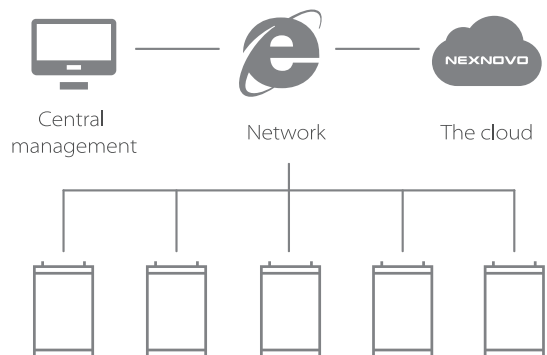
High brightness
& Energy saving

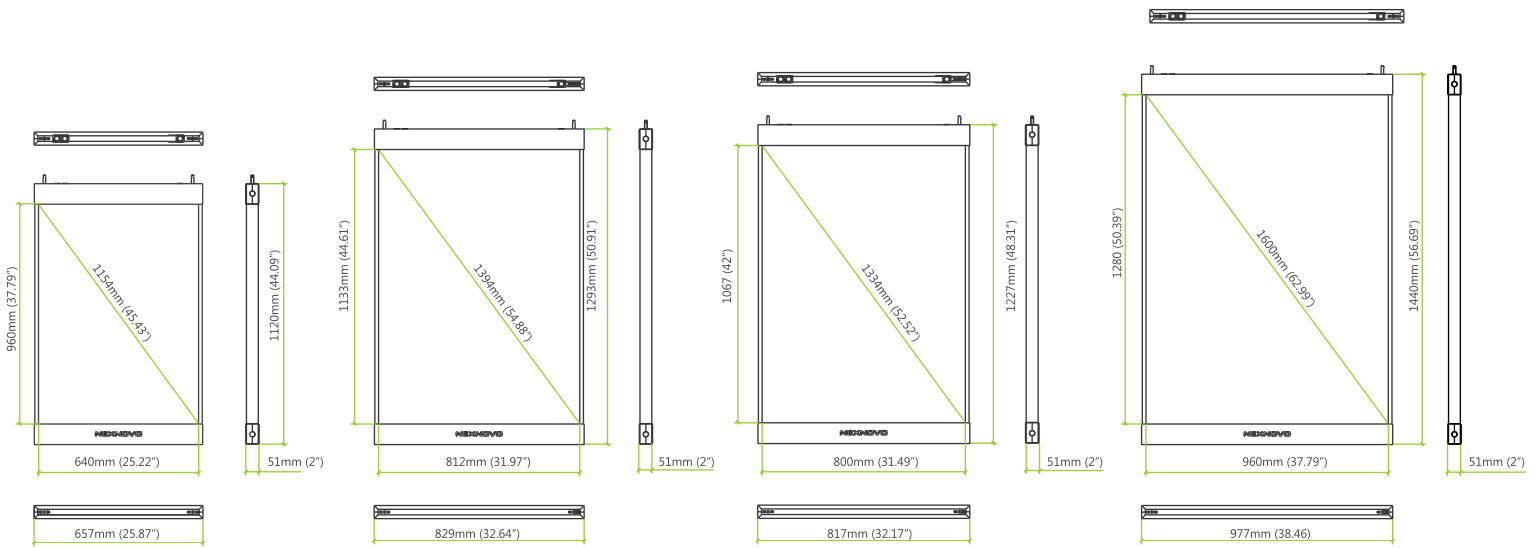


Easy for Assembly
and Adjustment



Central Cloud Management





XT2S/21kg

XT2M/28kg

XT3M/28kg

XT2、XT5 / 40kg

Model	XT2S	NEW	XT2M	NEW	XT3M	XT2L	XT5L
Pixel Pitch (mm)	W2.5 x 5.71		W2.6 x 5.71		W3.13 x 6.66	W2.5 x 5.71	W5.0 x 5.71
LED Model	SMD 1921		SMD 1921		SMD 1921	SMD 1921	SMD 1921
Brightness (nits)	5000~6000		5000~6000		5000~6000	5000~6000	5000~6000
Transparency	65%		65%		68%	65%	65%
Display Size (W x H)	640 x 960 mm 25.22 x 37.79 inch		812 x 1133 mm 31.97 x 44.61 inch		800 x 1067 mm 31.49 x 42 inch	960 x 1280 mm 37.79 x 50.39 inch	960 x 1280 mm 37.79 x 50.39 inch
Cabinet Dimension (L x W x H)	657 x 1120 x 51 mm 25.87 x 44.09 x 2 inch		829 x 1293 x 51 mm 32.64 x 50.91 x 2 inch		817 x 1227 x 51 mm 32.17 x 48.31 x 2 inch	977 x 1440 x 51 mm 38.46 x 56.69 x 2 inch	977 x 1440 x 51 mm 38.46 x 56.69 x 2 inch
Resolution (W x H)	256 x 160 (40960)		320 x 192 (61440)		256 x 160 (40960)	384 x 224 (86016)	192 x 224 (43008)
Max.Powe (W)	460		700		680	980	970
Avg.Power (W)	138		210		205	296	290
Ingress Protection	IP62		IP62		IP62	IP62	IP62
Refresh Rate (Hz)	≥ 1920		≥ 1920		≥ 1920	≥ 1920	≥ 1920
Input Power	AC100V~AC240V		AC100V~AC240V		AC100V~AC240V	AC100V~AC240V	AC100V~AC240V
Display Weight	21kg		28kg		28kg	40kg	40kg
Package Weight	33.3kg		35.5kg		37kg	51kg	51kg
Package Size	1250 x 770 x 180 mm 49.21 x 30.31 x 7.08 inch		1460 x 940 x 180 mm 57.48 x 37 x 7.08 inch		1390 x 940 x 180 mm 54.72 x 37 x 7.08 inch	1600 x 1090 x 180 mm 62.99 x 42.91 x 7.08 inch	62.99 x 42.91 x 7.08 inch 1600 x 1090 x 180mm
Package Method	Honeycomb carton		Honeycomb carton		Honeycomb carton	Honeycomb carton	Honeycomb carton
Working Temp	-10~40 °C		-10~40 °C		-10~40 °C	-10~40 °C	-10~40 °C



SCREEN LINE S.r.l.

38060 Besenello (TN) Via Nazionale, 1/n - 1/u | T.+39 0464 830003 | F. +39 0464 830500

info@screenline.it | screenline.it