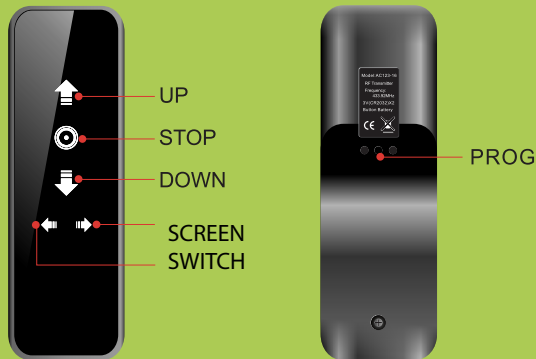




AC228-01
Double route radio receiver



AC123 transmitter with touch screen

I Features

- Built-in silver screen printing button, beautiful and lasting.
- Anti-scratches acrylic surface, built-in lamp light guide, soft and well-distributed.
- Roast piano lacquer frame, noble and elegant.
- Shock-proof TV5 relays.
- SMT machine automatic assembly in damp-proof enclosure.

! Installation Note

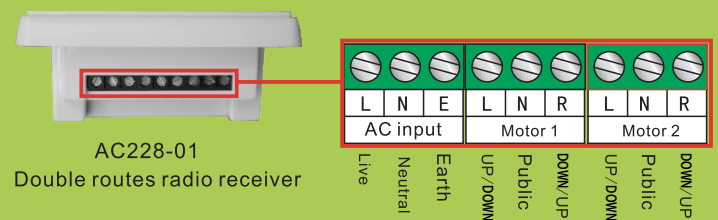
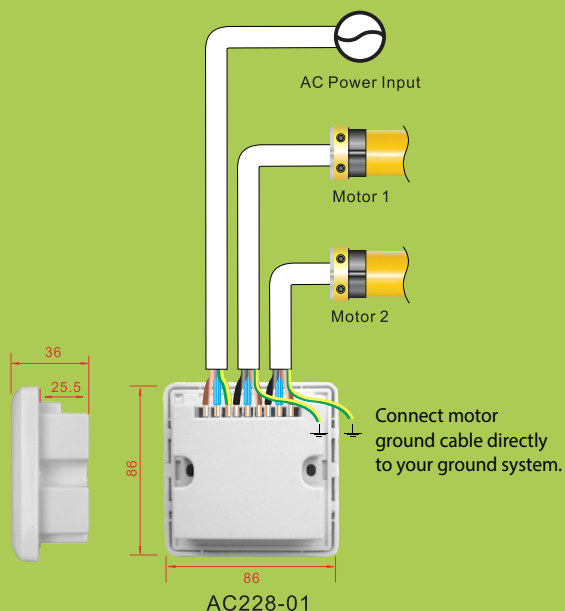
Besides the Standard of Electric Safety, please follow:

- Do not install the receiver in or too close to any metallic parts or it will affect the receive distance;
- Effective signal distance: 80m in open area;
- Minimum distance between the Receiver and the floor: 1.5m;
- Minimum distance between the Receiver and the roof: 0.3m;
- Minimum distance between the Receiver and the transmitter: 0.2m;
- Make sure the power has been cut off before wiring to ensure safety;
- Avoid static disturbance which could damage electronic components
- Use flexible cables;
- Ensure no longitudinal force is acting on cables after installation.

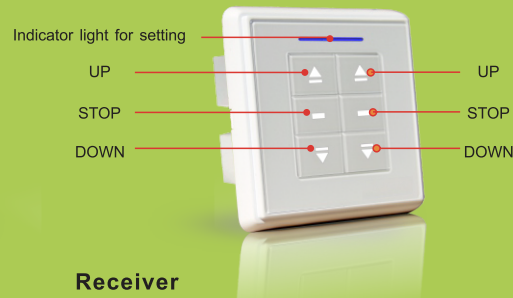
II Parameter

Model No.	Input voltage	Working temperature	Loading power	Receiving frequency	Receiving sensitivity	Transmitters quantity allowed	Operation
AC228-01	AC 230V	-40°C~+85°C	≤ 500W	433.92MHz	-110dBm	double route ≤ 20	remote/manual

III. Installation and wiring



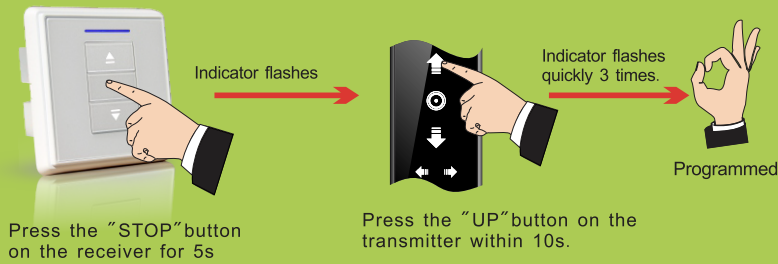
IV. Product diagram



V. Installation instruction

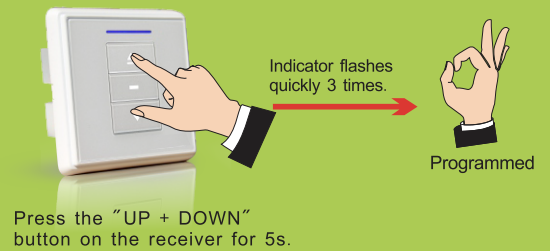
- * 5Mins is the longest operation time for motor;
- * 0.5S to transfer for up/down for motor.
- * Please choose the channel firstly when the transmitter is multi-channel.

1.Programming



2.Direction covertion

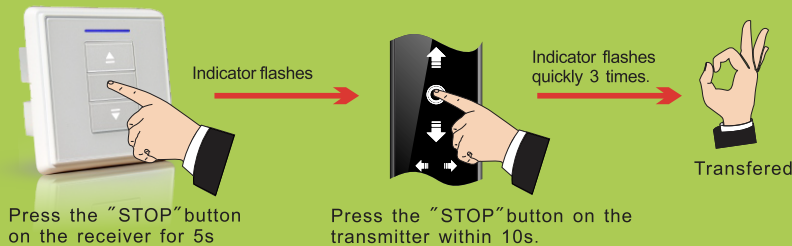
- * If the motor operates in a correct direction, no need to do the covertion, if not, it is necessary.



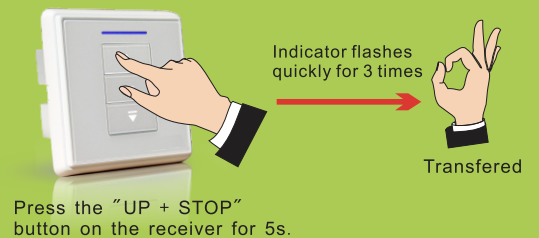
3.Dot-moving and continuous-moving transfer

- Remarks: Operation under dot moving mode, press UP/DOWN button >1.5s, motor move continuous, press UP/DOWN button <1.5s, motor move dot by dot.

Method 1:

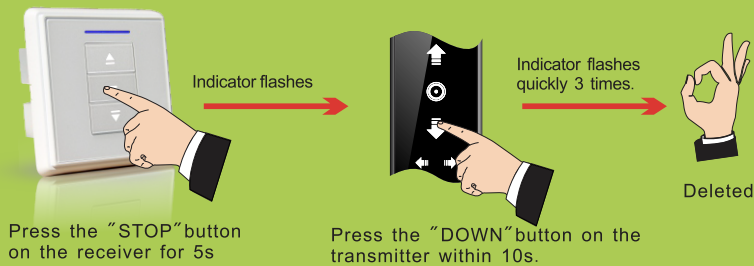


Method 2:



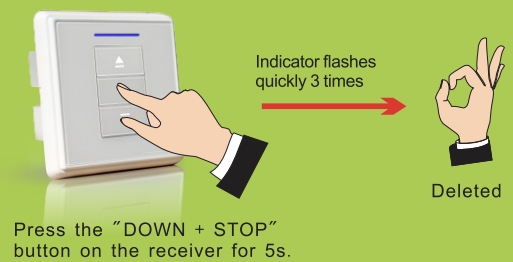
4.Delete single code

- *The single channel memory on the transmitter will be deleted after operation



5.Delete all codes

- * All memories on the receiver will be all deleted after operation



VI. Trouble and shootings

No.	Performance	Checking point
1	Indicator on receiver do not light	Please check wiring connection for receiver
2	Indicator on transmitter do not light or poor light	Please check the battery power and installation
3	Transmitter and receiver work commonly, but motor has no rotating	Please check the motor wiring