

# RECEIVER MANUAL



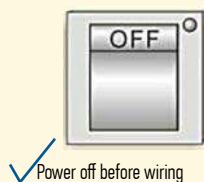
## 1. Features

- Work with all A-OK tubular motor
- SMT machine automatic assembly, dampproof craft
- Support of IR, RF, Manual control and DC 12V trigger
- Work with motorized projection screen

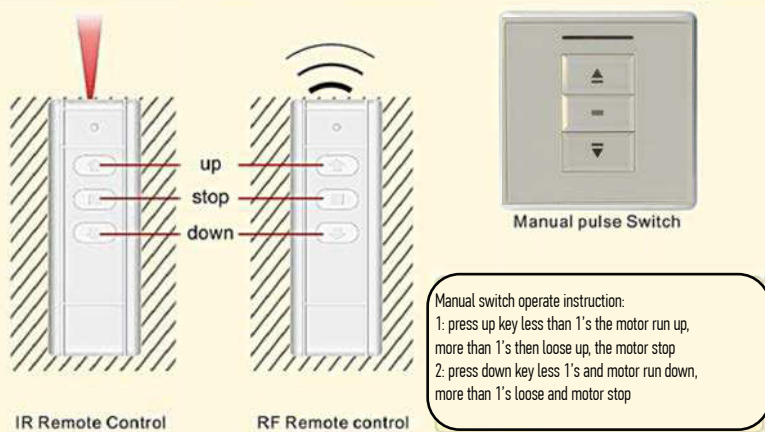
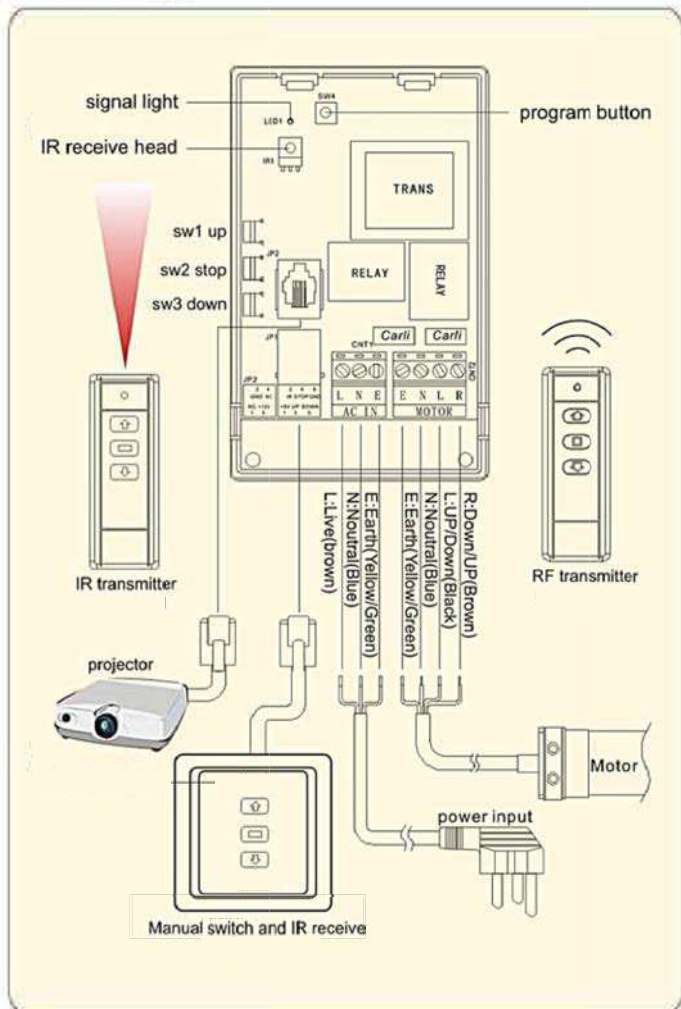
## 2. Parameters

Model N.	Voltage	Temperature	Receive distance	Loading Power	Frequency	Operation mode
	230VAC 50Hz	-40°C ~ +85°C	RF≥80M IF≥8M	≤ 500W	RF 433,92 HZ	RF, IR and Manual control, DV12V trigger

## ! Warning



## 3. Wiring



## Wiring

### Motor wiring terminal

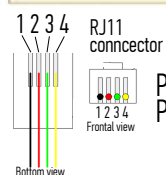
E: Earth (Green/Yellow)  
N: Neutral (Blue)  
L: UP /Down (Black)  
R: Down /UP (Brcwn)

### Power wiring terminal

N: Neutral (Blue)  
E: Earth (Yellow/Green)  
L: Live (Brown)

### out-link projector terminal

NC: empty terminal  
GND: earth wire  
+12V: DC trigger



PIN 3 = GND  
PIN 2 = +12V

### Manual switch wiring terminal

+5V: IR voltage  
IR: IR signal  
U: UP/DOWN (brown)  
S: stop (green)  
D: Down/up (black)  
G: Neutral (BLUE)

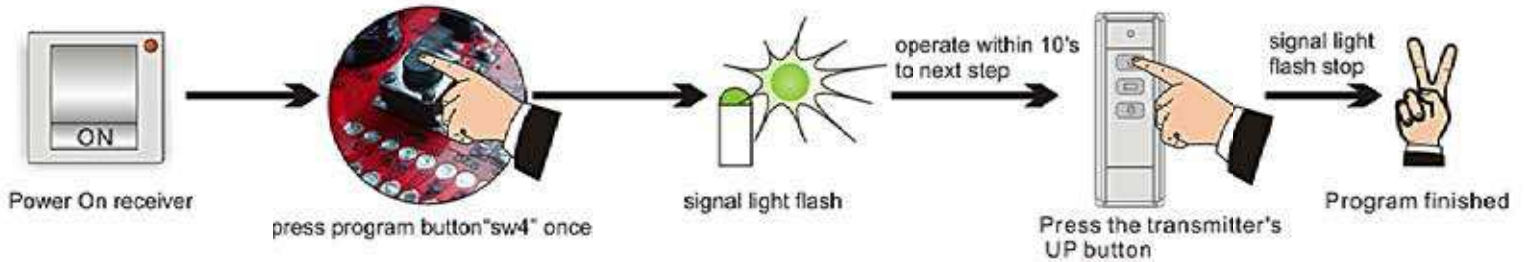


## Function Adjustment

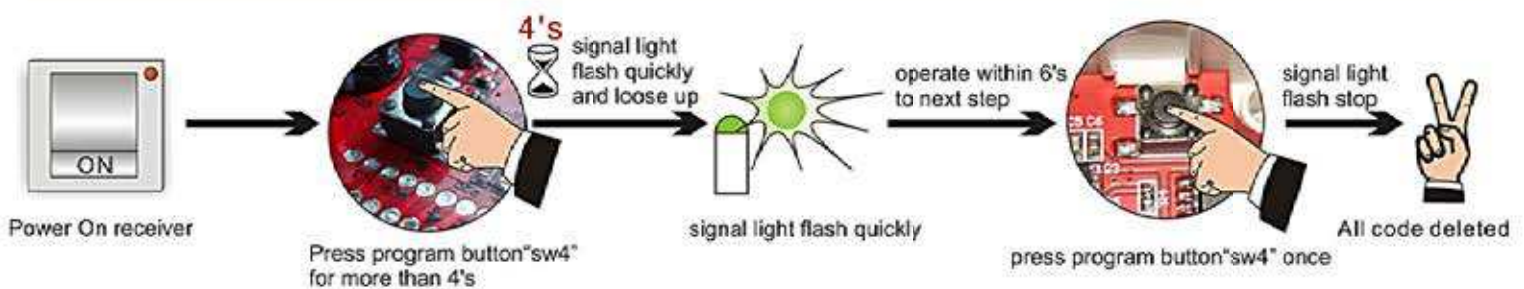
### Remark:

- ①IR remote control must make program (same as RF operation), while within effective range.
- ②Receiver would come back the original state if there are not any operations within 10's.
- ③Only total 20 IR or RF transmitter can be programmed with 1 receiver
- ④The longest working time of motor is 5 minutes

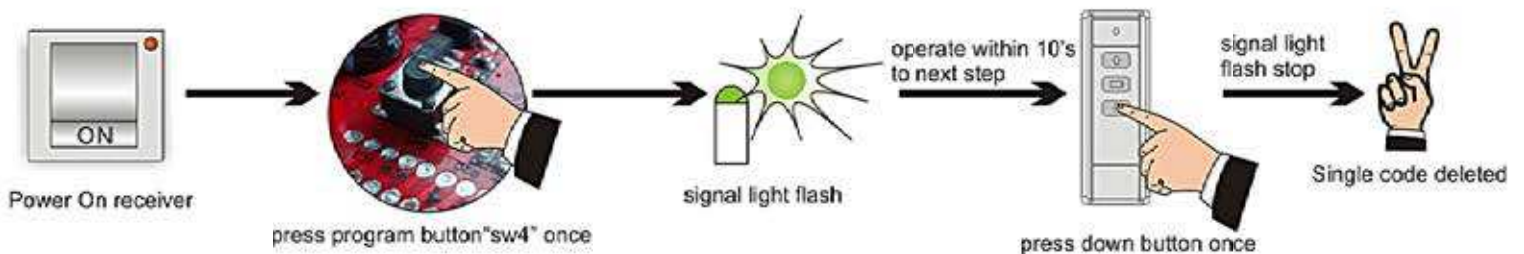
### 4. Program setting (select delete channel before operation)



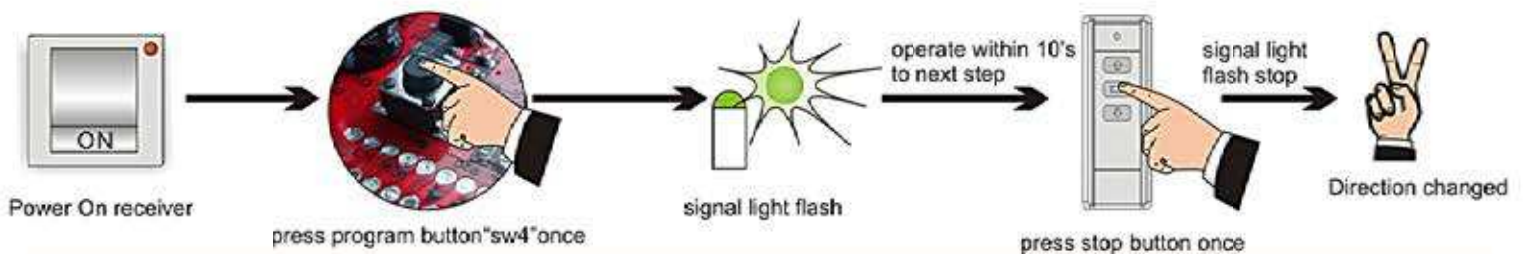
### 5. Delete all codes on receiver



### 6. Delete single code on receiver (select delete channel before operation)



### 7. Change direction



### 8. Troubles handle

Items	Trouble phenomenon	Test/Solution/ probable cause
1	When operate, the transmitter's LED1 work well, and the receiver doesn't action	Have a check with the receiver's wiring correct or not, or the program setting is OK
2	The transmitter's LED isn't bright or dark bright	Check the battery power is Ok or not (The battery install is OK or not)
3	The control system work well, but the motor is out of working	Checking the motor's wiring correct or not, and the motor had damage or not
4	Press up key, motor run down, press down key, motor run up	set change direction on control or exchange the up and down wire of motor