

## MAXIMILIAN form

PERSON*		E-MAIL ADDRESS	
COMPANY			
COUNTRY	MOBILE.		
PLACE OR NAME OF THE PROJECT			*REQUIRED FIELD

### VERSION

- STANDARD ( 2 safety belts )
- PRO ( 4 safety belts )

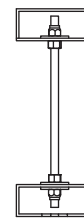
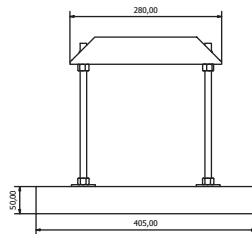
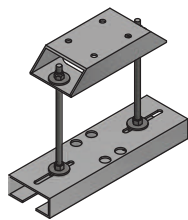
### VIEWING AREA



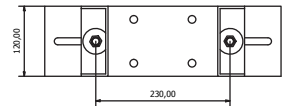
BASE in cm (max width 12m) HEIGHT in cm (max height 8m)

### BRACKETS FOR THE INSTALLATION: choose your installation method

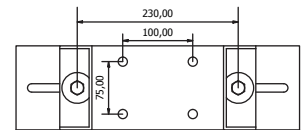
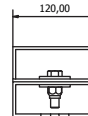
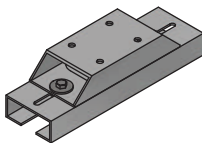
- HIGH CEILING BRACJETS: 3pcs.  
code: ACMAXFIL



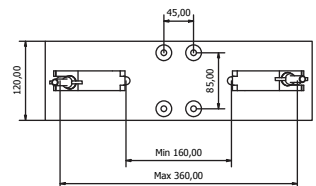
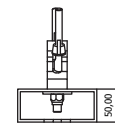
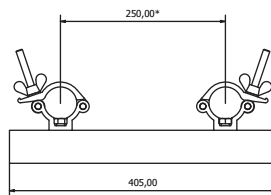
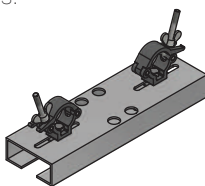
Threaded rod length: 100cm



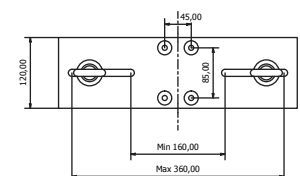
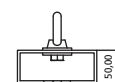
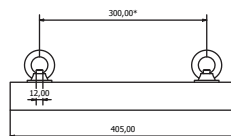
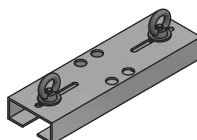
- CEILING BRACKETS: 3pcs.  
code: ACMAXSOF



- ALISCAF BRACKETS: 3pcs.  
code: ACMAXALI



- EYEBOLT BRACKETS: 3pcs.  
code: ACMAGOL



MOTOR POSITION

---

- RIGHT SIDE
- LEFT SIDE



CHAIN HOISTS: 3pcs

---



CHAIN LENGHT: 10m  
code ACMAXPA1

CHAIN LENGHT: 15m  
code ACMAXPA5

CEIL BRACKETS FOR CHIAN HOISTS: 3 pcs.

---



- PURCHASE BRACKETS  
code ACMAXCBC

MANUAL SWITCH

---

code ACMAXMA3



CABLE LENGHT (standard 11m)

---

- On request customizable: \_\_\_\_\_m.

CONTROLS ON REQUEST:

---

code ACMAXRF



- WallRF Control  
• Battery powered

code ACMAXTRF



- RF Control  
FM 868,8 MHz, FM 868,95 MHz

FABRICS:

---

- DUAL FACE
- CORAL
- WHITE ICE
- HOME VISION
- PERFORATED

Date

---

Signature

---