

Vertikal

Screen lift



It can lift screens from 300 base viewing area up to 700 cm



Features

Lift for screens up to 7 meters viewing area base. Modular system with 2 drums. Maximum height 500 cm. Tubular motor with integrated electromechanical brake.



Available for

- MOT
- JAGO
- COPERNICO
- LODO
- LODO EVOLUTION

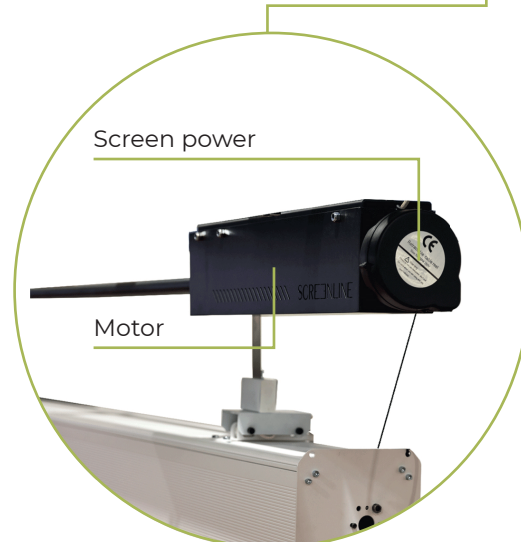


Technical Features

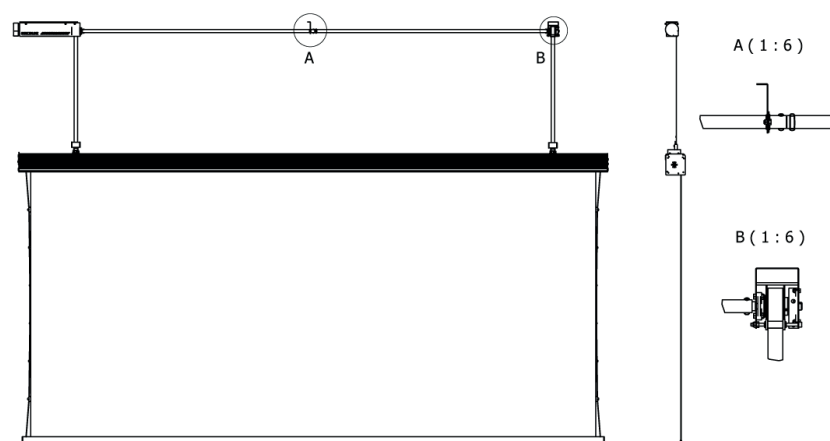
- 3 anchor points
- 2 steel belts
- Max height steel belts: 5m



• Screen designer and manufacturers of Italy •



Technical drawing



• Screen designer and manufacturers of Italy •