

**NEXNOVO<sup>®</sup>**  
*for next innovation*



# ***NexEsign***

Transparent glass LED displays



Transparent & Thin



High-tech design



Cloud base services



Green / Eco-friendly



Water-resistant & shatter-proof



Inter-Linkable



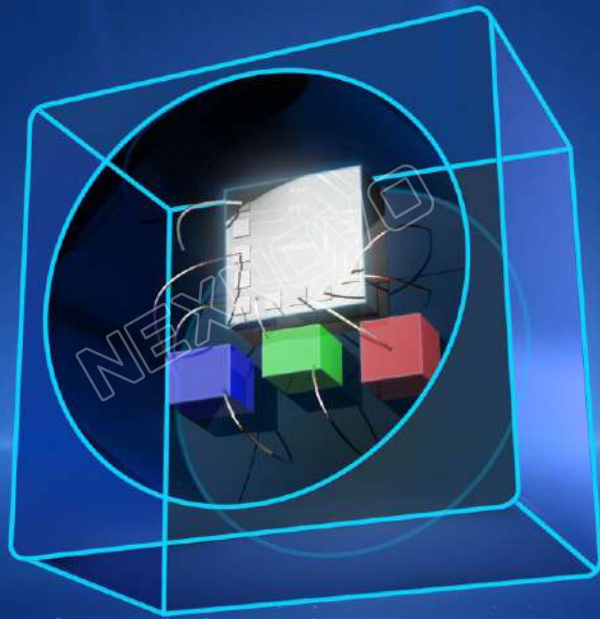
NexEsign is an ultra-transparent glass LED display using NEXNOVO's patented integrated-IC technology and nano film circuits. This display has an all-in-one cloud base content creation & management application, allowing a complete central administration. It is the new generation of smart high-tech displays that brings innovation to any and most markets requiring efficient and avant-guard signage.

Core technology

# Research and development of integrated-IC technology

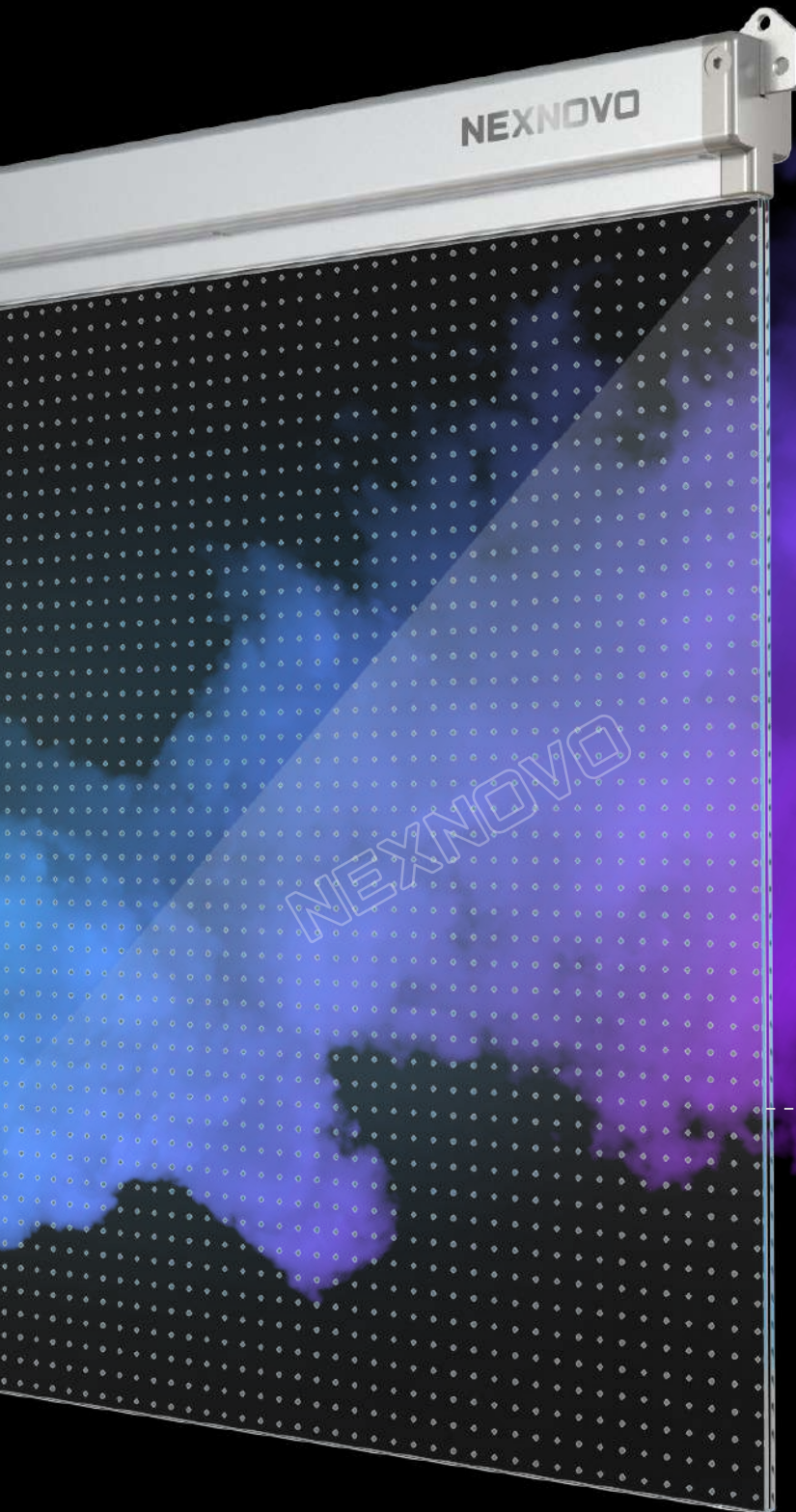
---

We make brighter displays  
We make displays more vivid and responsive





# Light, Transparent & Thin



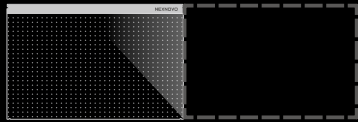
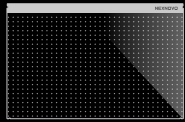
10 kg/panel

92% Transparency

Simple, sleek and see-through daylight friendly displays.

7.5mm slim

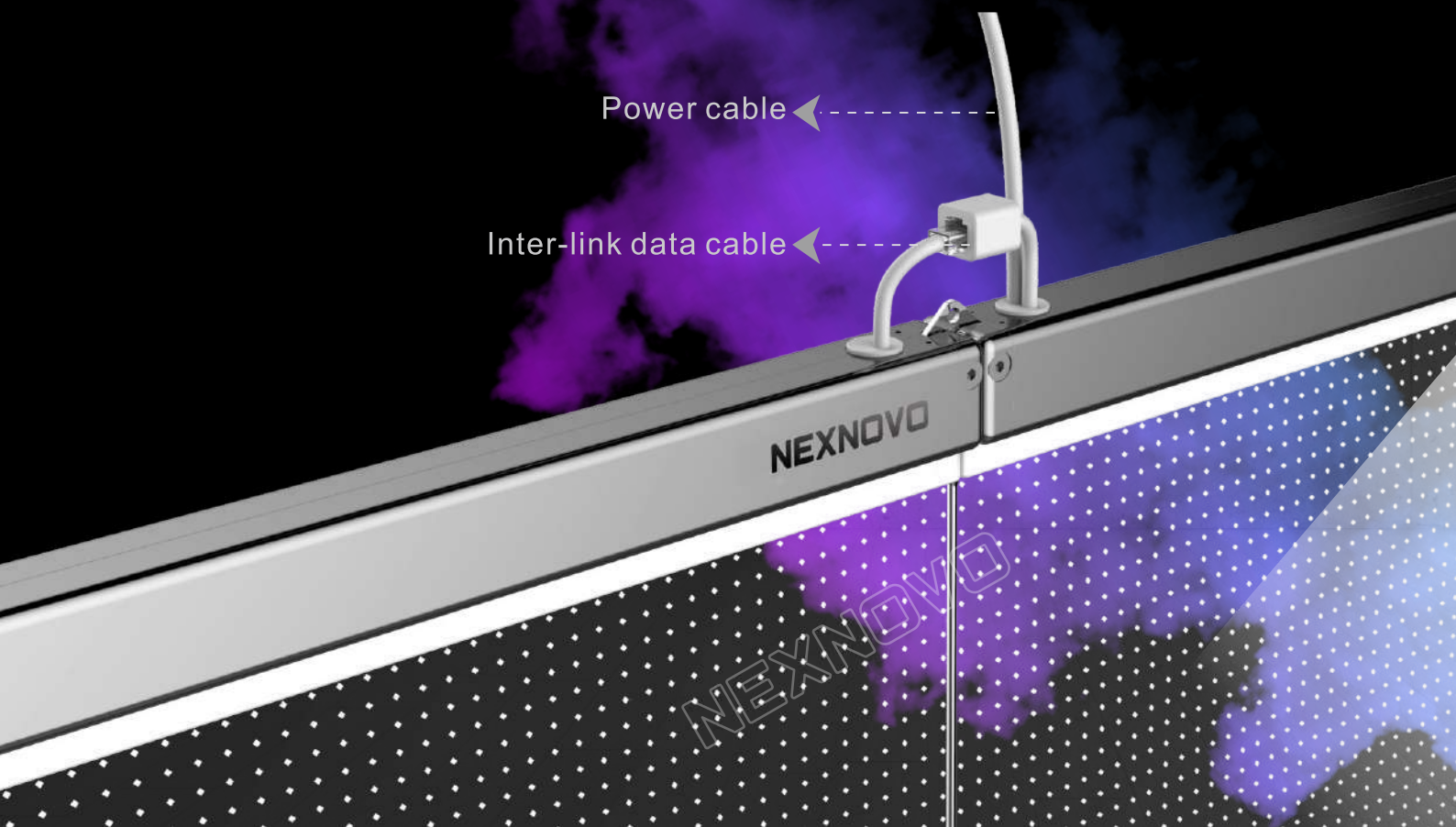
# Inter-Linkable



.....

## Easy installation

Ease and simplicity of operation







# LET'S DO IT.

## Easy and centralized management

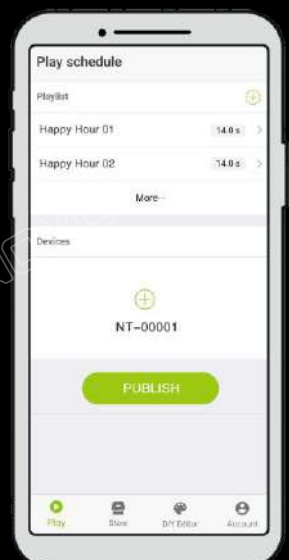
- ◆ NexCloud services or HDMI input.
- ◆ NexCloud is a web platform where publishing content is made easy.
- ◆ “One-click” easy publish and remote management on your mobile phone or on the web portal.
- ◆ Professional customized content services are available.



## Decide on a template, customize, and then publish!

## Making content designing a breeze.

Be your own design specialist.

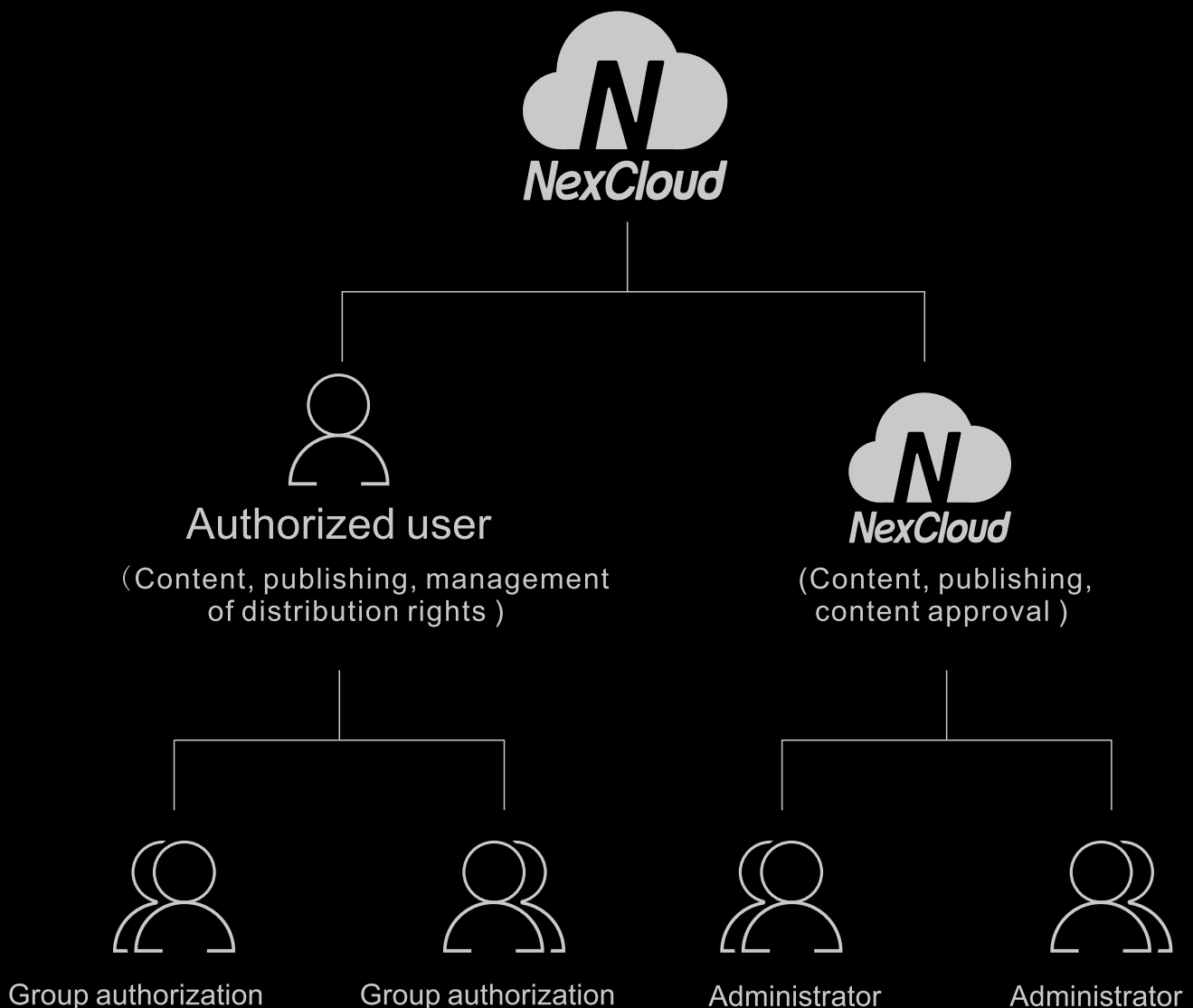


Publish

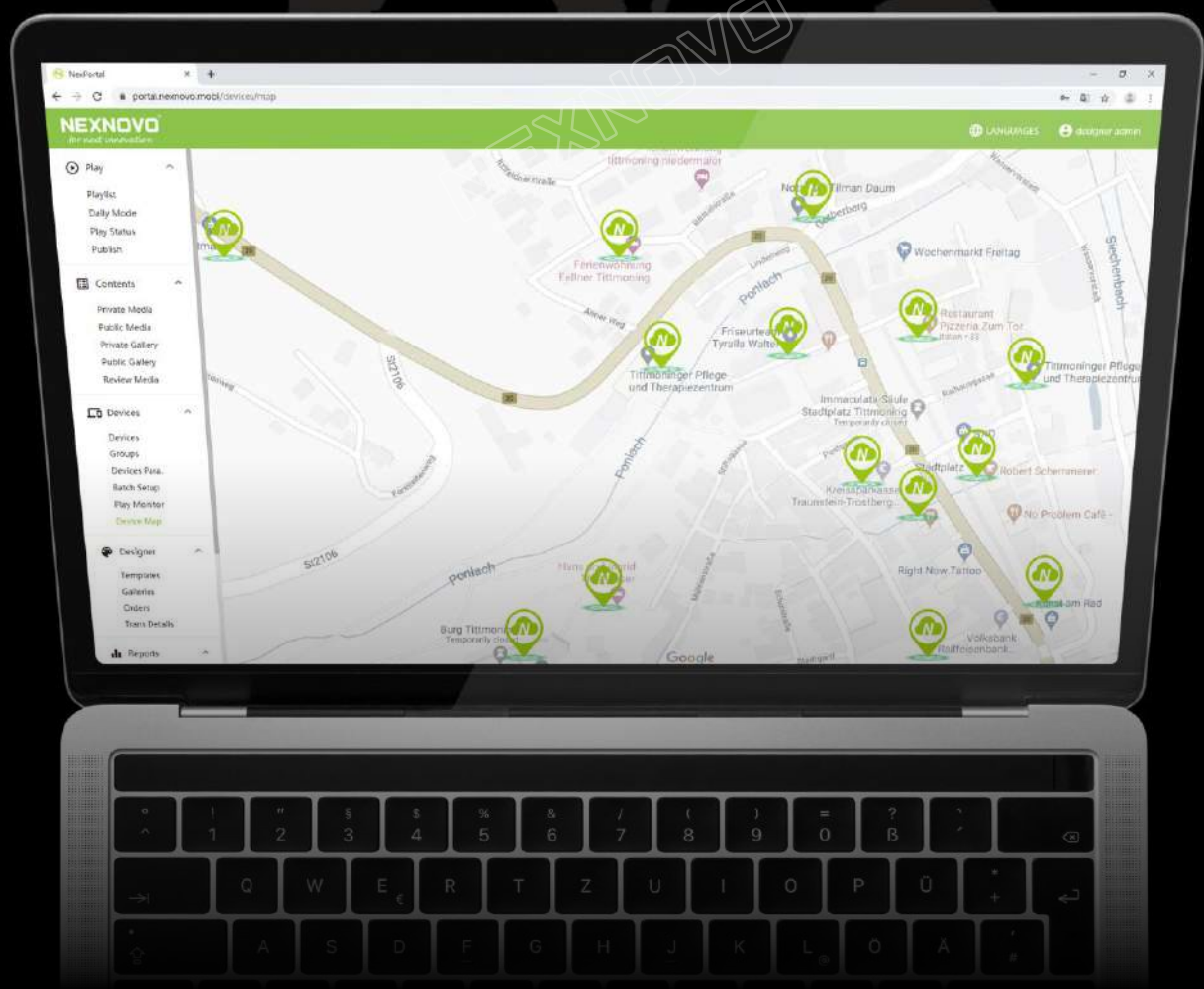


# Stay in control with centralized management

Support flexible and simple hierarchical policies.  
Never has content publishing been so flexible and safe.







# Real-time display locator

Geographic positioning of your displays  
can be seen directly on the application

# A smart application for an innovative display

NexEsign is versatile, use it for simple way finders, critical information displays or just amazing advertisers. In environment such as; airports, train stations, retail stores, healthcare, education system, corporate offices, food and beverage industry, tourist sites and much more.









# Specifications



Model	NT
LED model	NEX2020-T
Display size (WxH) (mm)	800 x 500
Cabinet size (WxH) (mm)	800 x 575
Pixel density (dot)	3648
Pixel pitch (mm)	10.52 x 10.42
Brightness (cd/panel)	3000-3500
Max. power (W/panel)	240
Ave. power (W/panel)	100
Transparency	92%
Weight (kg/panel)	10
Ingress protection	IP65
Refresh rate (Hz)	≥3840

# NEXNOVO<sup>®</sup>

*for next innovation*



Head Office  
No.8,Qinglan Road1,Pingshan District, Shenzhen,China  
Tel:0755-33078008  
E-mail:sale@nexnovo.com  
<http://www.nexnovo.com>

© 2020 NEXNOVO TECHNOLOGY CO.,LTD  
All rights reserved. Specifications are subject to change without notice (V1.0)