

Immersive Teaching System

Immersive, rewritable, high-resolution video projection screen.

your
logo here



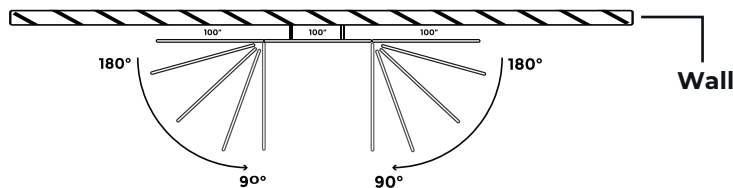
your
logo here

Immersive, rewritable, high-resolution video projection screen.

Designed for school and public environments, the screen is characterized by stability and sturdiness. Its high-quality materials and wall anchorage ensure safety and longevity.

Immersiveness: the screen is composed of 3 modules assembled together by adjustable hinges.

These make it possible to adjust the position of the side modules and thus the relative immersivity angle from 180° to 90°.



Rewritability: Each individual module consists of a 100" screen. It is fully rewritable. It can be used as a whiteboard written on by markers. The special surface resists all chemical cleaners and solvents, and the extreme hardness prevents damage caused by ballpoint pens or other improper tools.

Safety: bottom and side panels are attached to the construction. These block possible passage of students or unauthorized persons under the screen.

Stability: Each structural component is designed to give stability to the screen and ensure continuous finger touch functionality (without interruption between the 3 screens) of UST video projectors. The important robustness, provided by the carefully selected materials of which the screen is composed, nullifies the risk of screen structure instability caused by unintentional knocks or bumps. At the same time, it ensures its perfect longevity over time.

Finger Touch: The surface of the screen is comfortable to touch, smooth and compact. It does not tire the finger during prolonged use.

Turnkey kit created in partnership with:



Immersive



Finger touch



Rewritable



Technical specifications:

Integrated solution consisting of: 3 projectors Epson EB-735Fi laser interactive ultra-short throw; Ares compact media server from ZEBRA Multimedia and the control tablet; an anchored structure designed by Screenline that supports the projectors and screen for interactive projection.



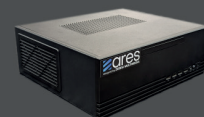
The brightness of Epson projectors is 3,600 lumens, therefore it is also suitable for bright environments. 16 W integrated audio.

Two ways how to access interactivity: with the pens supplied or using your fingers (Finger Touch functionality).

Screenline screen consists of 3 modules 2,22 m assembled by adjustable hinges. It is made of resistant materials and is safe: it has no sharp edges and complies with the EN 13501-01 class C-s2,d0.



The Ares mediaserver integrates all the functions of projectors' control and interactivity, as well as content management.



Projector connectivity: 3 HDMI inputs, 2 VGA inputs, 1 VGA output, 4 USB 2.0 sockets, RS-232C and LAN interfaces, Wi-Fi 802.11a/b/g/n/ac, Miracast, stereo input jack socket, 3 output "audio jack", microphone input.

• **Screen designer and manufacturers of Italy** •

Ares education mediaserver



Open but safe

It is possible to expand the possibilities offered by the system by accessing any web content, as well as exploiting the functions of cloud suites such as G-suite or Microsoft 365. Through an administrator account, which will be provided to qualified personnel within each institution, it is possible to install any other Windows compatible application. The same protection is provided for the system settings, in order to avoid tampering or incorrect configurations by less trained users. To further increase the level of security, access to inappropriate content or dangerous sites is blocked at the system level.



MozaLearn by Mozaik

Among the tools available there is mozaLearn, a suite of solutions for digital education. MozaLearn consists of mozaWeb - a web-based platform - and mozaBook. MozaBook is educational presentation software for teachers, a solution package that expands educational tools with illustrations, animations and interesting possibilities for presentations. It is possible to draw and paint, insert images and interactive contents (3D, video, audio, flash, etc.), in the program notebooks. MozaWeb offers interactive content for pupils and for learning at home as well. By creating a mozaWeb account you can access interactive content, tools and games related to school subjects from kindergarten to the final exam, using any web browser.



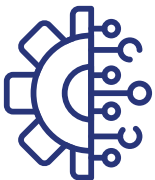
Control and management

The Ares compact media server, produced exclusively by ZEBRA Multimedia for the Immersive Teaching System solution, integrates all the video projector and interactivity control functions, as well as content management.



Control tablet

The mediaserver is accompanied by a control tablet which, via a touch interface, allows the multi-projection system to be switched on and off, as well as allowing access to some basic configurations without the need to use the remote control. All cables for connecting the media server to the projectors, power supply and network are also included.



Educational software

The mediaserver includes a software license that allows access to a wide range of educational multimedia content that can be used in an immersive way: videos, animations and 3D reconstructions, interactive activities and quizzes suitable for different educational cycles, from primary to secondary school grade.



Remote assistance

A remote assistance service is included for hardware problems related to the media server or the control interface, as well as a support service relating to the specific use of the pre-installed educational software.

Technology made easy for the teacher



The image is high resolution, sharp enough to look real



The software is intuitive and teachers can focus on the lesson



The structure is robust and reliable, as are the laser projector which, unlike the lamp ones, do not have elements that must be replaced periodically

• Screen designer and manufacturers of Italy •