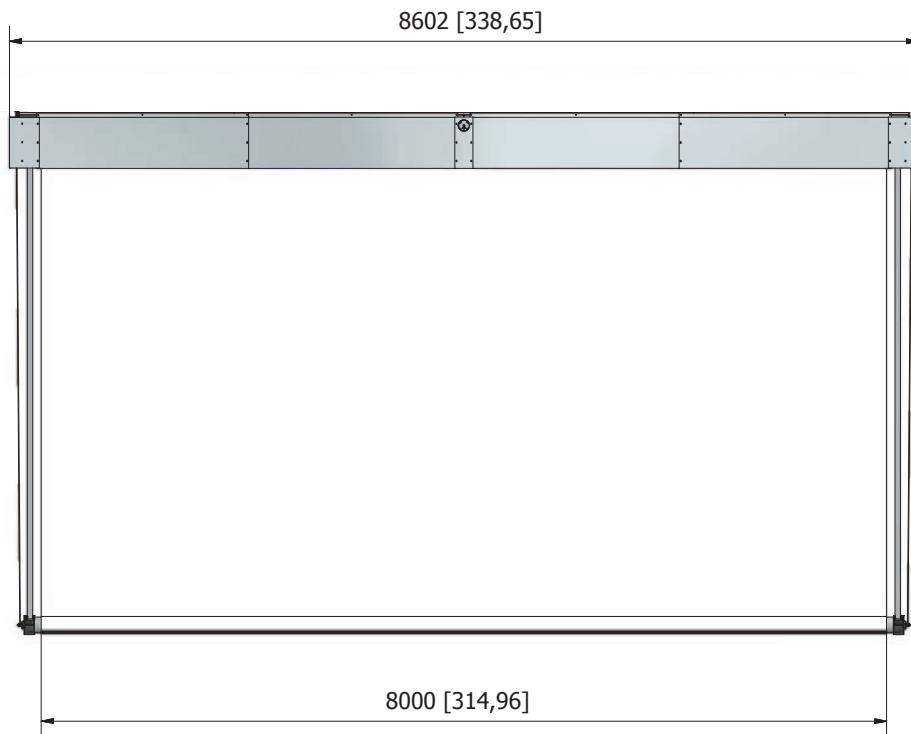
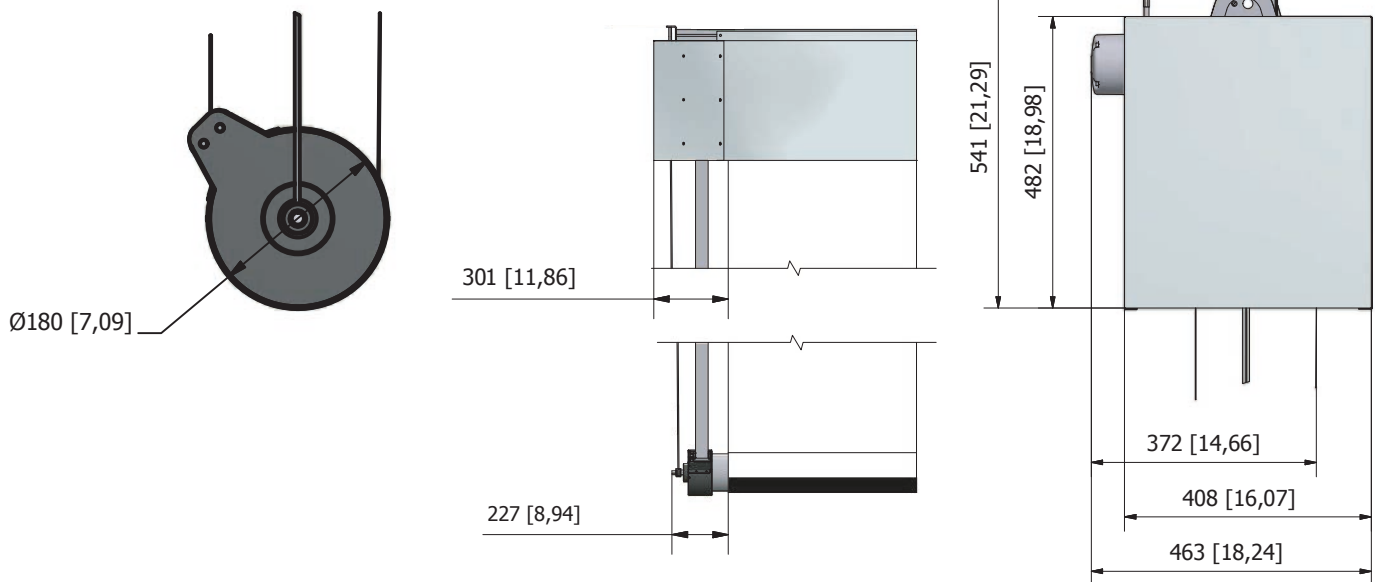


MAXIMILIAN

PERMANENTLY INSTALLED LARGE SIZE SYSTEMS



MAXIMILIAN is a permanently installed bottom-roller projection screen system. Available in standard sizes up to 1200 cm x 800 cm / 472 x 315 inches (w x h). The system is ideal for very large, permanently installed applications.



Details

1. Screens metal frame covered by sheet metal ensure a durable and rigid system.
2. Mechanical steel band spool assembly for perfect alignment when rolling up and down and safe screen use.
3. Fall arrest system to ensure an additional safety in case of steel band severing
4. Aluminum tube Ø 150 mm / 6" with PVC screen surface

MAXIMILIAN

PERMANENTLY INSTALLED LARGE SIZE SYSTEMS

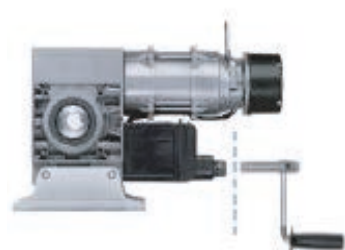
5. Drive shaft and motor unit 230V/ 50 Hz / 3~, (different voltage and frequency on request) with gearbox and switches.
6. Standard clamps for specific installation requirements.
7. Variable speed control adjustable from approx. x.x m/s - 0.25 m/s (x"/sec - 8"/sec)

The alluminium tube goes up and down with the screen surface. When unrolled, the screen is fully open and the alluminium tube is at the bottom.

The bottom roller mechanism ensures perfect flatness of the fabric.

Technical Information (MFZ Drive SA20)

- 230 V/ 50 Hz / 3~, (on request different voltage and frequency)
 - integrated safety catch device, independent from position and speed
 - self-aligning bearings
 - rolled worm shaft
 - thermal protection when operating
 - plug-in connections
-
- available with external or integrated controls



Hand crank provided for manual operating.



End position setting
through absolute value encoder (AWG)

Technical details		SA20
driving torque	Nm	180
maximum safety catch torque	Nm	784
certificate no. of safety catch system		TorFV 9/147/1
driving motor speed	giri/min.	24
motor output	kW	1,1
operating voltage	V	230V / 3~
mains frequency	Hz	50
control voltage	V	24
motor current rating	A	2,8
* max. cycles per hour		20
supply cable, on site	mm ²	5 x 1,5
fuse protection, on site	A	10,0
protection grade	IP	54
** temperature range	°C	-20 / +60
continuous sound pressure level	dB (A)	< 70
individual weight	kg	23
maximum output revolutions		18
Ø sleeve shaft	mm	30

MAXIMILIAN

PERMANENTLY INSTALLED LARGE SIZE SYSTEMS

Standard delivery:

1. Pre-assembled large size screen system Maximilian including metal frame covered by sheet metal, mechanical steel band spool, fall arrest system, alluminium tube Ø 150 mm / 6" with PVC screen surface, drive shaft and motor unit 230 V/ 50 Hz / 3~.(on request other voltage and frequency)
2. Power and control cable. Standard and max length: 30 m / 82'. On request other sizes.
3. Three standard eyebolt brackets which can be used with hoist chains and/or as a further safety anchor once the installaltion is completed.
4. MFZ (CS3101FU1.5kW) control system. **230V/50/60h.**

Standard operation:

- UP-DOWN - STOP
 - 1 programmable intermediate stop position (only with the purchase of manual switch) .
5. Instruction manual



Cable length 30 mt.



Amber signal light, with wall bracket flashing only when operating.

Accessories (on request):



S-APZ 4-1R/2 (MFZ)
1 programmable
intermediate stop position.

4-button input unit:
UP-DOWN-STOP- INTERMEDIATE STOP
Cable lenght on request.

mm	192	<i>height - Altezza</i>
mm	75	<i>width - Larghezza</i>
mm	65	<i>depth - Profondità</i>
	IP 54	<i>protection grade</i>
		<i>Classe di protezione</i>
g	1000	<i>weight - Peso</i>

MAXIMILIAN

PERMANENTLY INSTALLED LARGE SIZE SYSTEMS



RT 21-5002M-01 (MFZ)
2-channel 868 MHz

height 55 mm
width 36 mm
depth 16 mm
weight 17 g



RT 21-4102M-01 (MFZ)
2-channel 433 MHz

height 55 mm
width 36 mm
depth 16 mm
weight 17 g



CS-Funk 868 (MFZ)
Receiver module, 1-channel
for CS control, 868 MHz

CS-Funk 433 (MFZ)
Receiver module, 1-channel
for CS control, 433 MHz

Tensione di rete	Alimentazione mediante comando CS	
operating voltage	power supply from CS control	
Corrente nominale · rated current	12	mA
Classe di protezione · protection grade	IP 20	
Gamma di temperatura · temperature range	-20 / +60	°C
Altezza · height	63	mm
Larghezza · width	38	mm
Profondità · depth	10	mm
Peso · weight	15	g
Modalità di funzionamento · operating mode	A impulsi · impulse	

Installation

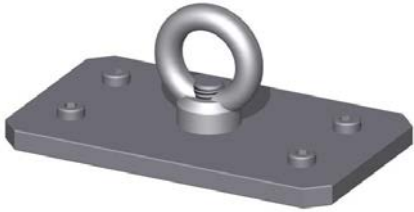
Please note:

- Installation on 230V system only permitted by qualified and licensed electricians.
- All installation instructions and wiring diagrams must be read by a qualified, licensed electrician prior to installation.
- ! Incorrect system installation may damage the motor and control system. Failure to follow the installation instructions will void all warranties

MAXIMILIAN

PERMANENTLY INSTALLED LARGE SIZE SYSTEMS

3 eyebolt units included:



height 68 mm
width 170 mm
depth 100 mm
weight 1,5kg

*usable as a hoist or as a hook
for safety anchor

Types of brackets for the installations: on request



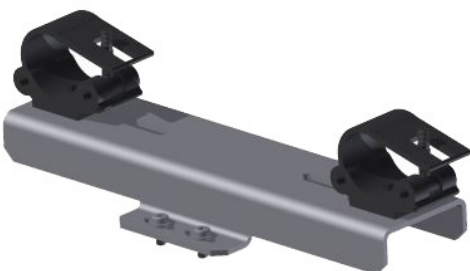
HIGH CEILING MOUNT BRACKETS: 3 units.

height variable
width 405 mm
depth 180 mm
weight 6,1 kg + threaded rod weight



CEILING MOUNT BRACKETS: 3 units

height 100 mm
width 405 mm
depth 180 mm
weight 6,1 kg



TRUSS MOUNT BRACKETS: 3 units

height 177 mm
width 405 mm
depth 180 mm
weight 4,5 kg

MAXIMILIAN

PERMANENTLY INSTALLED LARGE SIZE SYSTEMS

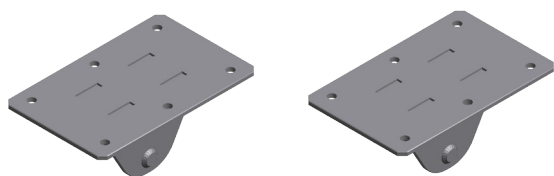
Type of manual chain hoists for lifting: 2 units (on request)



- Compact and robust steel body
- Sure and reliable mechanical brake with safety pawl
- Zinc plated load chain according to EN 818-7
- Trolley wheels with ball bearings
- Safety lugs
- Rubber bumpers

Chain lenght on request: 10m. or 15m.

Ceil brackets for chian hoisting: 2 units (on request)



height 128mm
width 300 mm
depth 190 mm
weight 3,4 kg